

Sightseer



Why Sightseer?

- Four innovative floorplans
- Swivel Ultraleather™ cab seats
- Available StudioLoft™ drop-down bed
- Corian® galley countertops
- MCD solar/blackout roller shades (MCD blackout roller shades in galley)
- Choice of queen or king bed (30A queen only)
- Powered patio awning with LED lighting
- Leveling jacks with 3-position controls



On the Cover: 35G Mahogany Full-Body Paint

35G Mountain View with Coffee-Glazed Vienna Maple Cabinetry

Take the Scenic Route

The Winnebago Sightseer® invites you to open your eyes to great value and good times in Class A comfort. Four floorplans deliver your perfect living experience built to Winnebago Industries'® exacting standards. This year, LED ceiling lights bring energy efficiency to a coach already loaded with premium features such as Corian® countertops in the galley, MCD solar/blackout roller shades (MCD blackout roller

shades in the galley), and Ultraleather™ cab seats. The 35G delivers exceptional travel flexibility with the inLounge™ extendable sectional sofa and movable inTable™. For additional sleeping space, add the StudioLoft™ drop-down cab bed to any floorplan. Make time to take the scenic route in your Winnebago Sightseer.



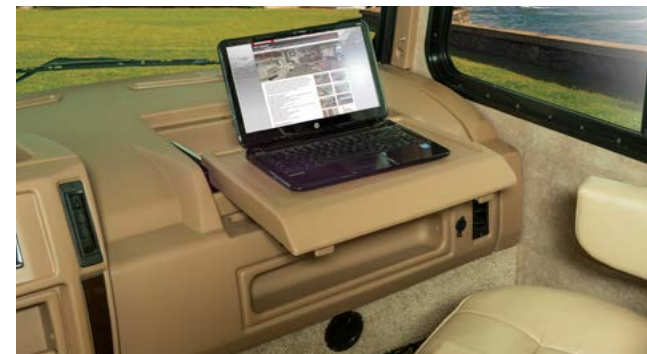
Recognized Quality The RV Dealers Association bestows its annual Quality Circle Award based on dealer ratings to the manufacturers that provide exceptional products, service and support. Only one manufacturer has received this honor for seventeen consecutive years: Winnebago Industries®

Best in Class

See how Winnebago Industries takes motorhome design and function to the next level, and why we've earned the right to be called the Most Recognized Name in Motorhomes.®



Click on this icon throughout the brochure to link to more information on the web.



The **Dash Workstation** is the perfect place to plan your trip.



Keep your clothes fresh and clean wherever you are when you add the available **Washer/Dryer** (33C, 35G).



The multi-functional **inTable™** does it all; a coffee table or counter extension, end table, or flexible dining for six.



The **inLounge™** becomes exactly what you need it to be; a sofa, dining seating, or an additional space for sleeping.





35G Mountain View with Coffee-Glazed Vienna Maple Cabinetry

With four distinct floorplans, the Sightseer offers something for everyone. Kick back and relax in the Ultraleather™ hoop-base recliner with a built-in footrest. It reclines, swivels, and can be moved to your favorite spot when you're not traveling. From the available Rest Easy® sofa (33C), or the inLounge™ and optional fireplace (35G), to the Extendable Sectional Sofa (36V) – the Sightseer offers many popular features, fit for both an afternoon of quiet reading or lively entertaining. At the end of a long day, relax in front of the large HDTV and available Home Theater Sound System with a DVD player.



HDTV



Ultraleather Hoop-Base Recliner

This complete galley allows for easy meal preparation with desirable amenities such as a microwave/convection oven, three-burner range top, and an available four-door (NA 30A) refrigerator/freezer with an icemaker. The Corian® solid-surface countertops and matching sink covers offer plenty of preparation space, while the drawers on full-extension slides and the pantry provide an abundance of storage space. The movable inTable™ provides additional counter space in the galley (35G).



35G Galley



inTable



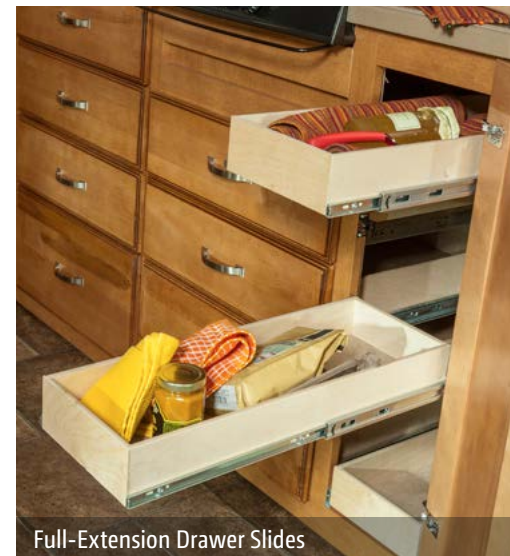
GoWinnebago.com



35G Available Refrigerator/Freezer with Icemaker



35G Pull-Out Cabinet



Full-Extension Drawer Slides

Whether you are looking for an extendable U-shaped dinette (30A), an extendable dining table/buffet and chairs with a 40" retractable HDTV (33C), a BenchMark® full comfort dinette (33C and 36V), or the inLounge extendable sofa with the movable inTable (35G), the Sightseer offers a variety of dining arrangements to suit your preference.



35G inLounge Extendable Sofa with Movable inTable

With the walk-around queen or available king bed (NA 30A), you'll enjoy the standard HDTV that is connected to the coach DVD system in comfort. A chest of drawers on most models and spacious wardrobes ensure plenty of space for all of your traveling necessities.



35G Powered Queen Bed Up



35G Powered Queen Bed Down



35G Wardrobe Closet



35G Optional Washer/Dryer



35G Bathroom



35G Shower



Dash

Thanks to the rearview color monitor system, a six-way power Ultraleather™ driver seat, and easy-to-read controls, you can feel more confident while piloting your Sightseer. Your co-pilot will appreciate the additional space provided by the dash workstation. An iPod®/MP3 input and available SiriusXM™ satellite radio (subscription not included) offer hours of entertainment while on the road. Both cab seats swivel to face the lounge area, making your living space more comfortable and accommodating.



Power Mirrors



Swivel Cab Seats



Radio/Rearview Monitor



You'll enjoy the outdoors just as much as the indoors with the powered patio awning and the available exterior entertainment center with an HDTV. Large storage compartments with single paddle latches on the doors make it easy to access all of your gear. The exterior service center with color-coded labels and the QuickPort® service connection hatch make hookups quick and uncomplicated.



Fiberglass Roof

The crowned, one-piece fiberglass roof is backed by a 10-year limited parts-and-labor roof skin warranty.

Rubber Can't Cut It

Rubber roofs used by competitors can streak and degrade over time.

Thermo-Panel® Sidewalls

By layering fiberglass and high-density block foam insulation with welded aluminum support structures, we create some of the industry's strongest, most durable and lightweight sidewalls.

E-Coating An electrodeposition coating helps protect critical steel components.

Embedded Steel Metal substructures embedded into the sidewall provide solid attachment points to keep cabinets and appliances mounted securely in place.

Laser-Cut Tubing

Precision laser cutters create precise joints in structural steel that are stronger and require less welding.



Interlocking Joints

Specially engineered interlocking joints connect the floor, sidewalls and roof where competitors often rely on simple screws to bear the weight.



Solid Framework Aluminum extruded in our own facility to our exacting standards creates an extremely strong and solid structural framework.

**SUPER
STRUCTURE**
BUILT TO LAST

Every coach—from our smallest Class C to our largest diesel-pusher model—is built to Winnebago Industries'® legendary SuperStructure® construction standards. It's a process developed and refined over more than 50 years of building some of the strongest, most durable coaches in the industry.

TESTING

Before rolling out of our factories, every coach undergoes an extensive 113-point inspection. Each coach also passes a high-pressure water test that simulates rain at a rate of 50-inches per hour to check for leaks. During the design process, our computer simulations, physical testing center, and rigorous test track ensure each model is built to last.



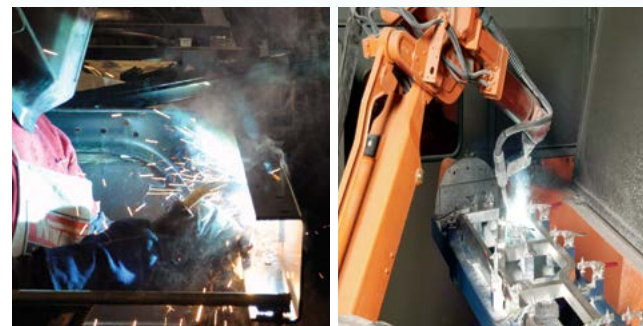
DETAILS

At Winnebago Industries, we treat the features you can't see with the same care as the ones you can. Look in the access panels of some of our competitors' coaches and you'll see loose insulation and wires haphazardly strewn about. Winnebago Industries maintains a clean fit and finish throughout so your coach will last for the long haul.



BUILT IN-HOUSE

We extrude our own aluminum. We rotocast our own plastic components. In fact, we manufacture most of our own parts so they are designed to fit the space, rather than fitting the space to an awkward off-the-shelf component size.

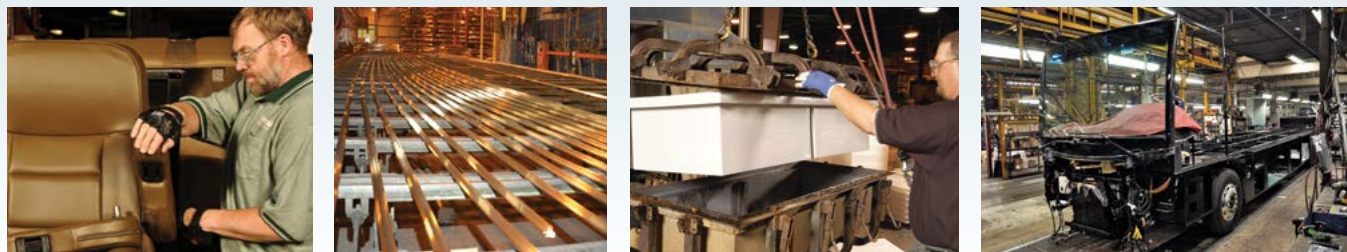


**SUPER
STRUCTURE**
BUILT TO LAST

 Visit BetterBuiltRVs.com to gain real insight into what goes into a Winnebago Industries motorhome.

TAKE A TOUR

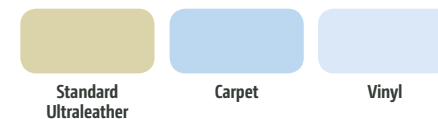
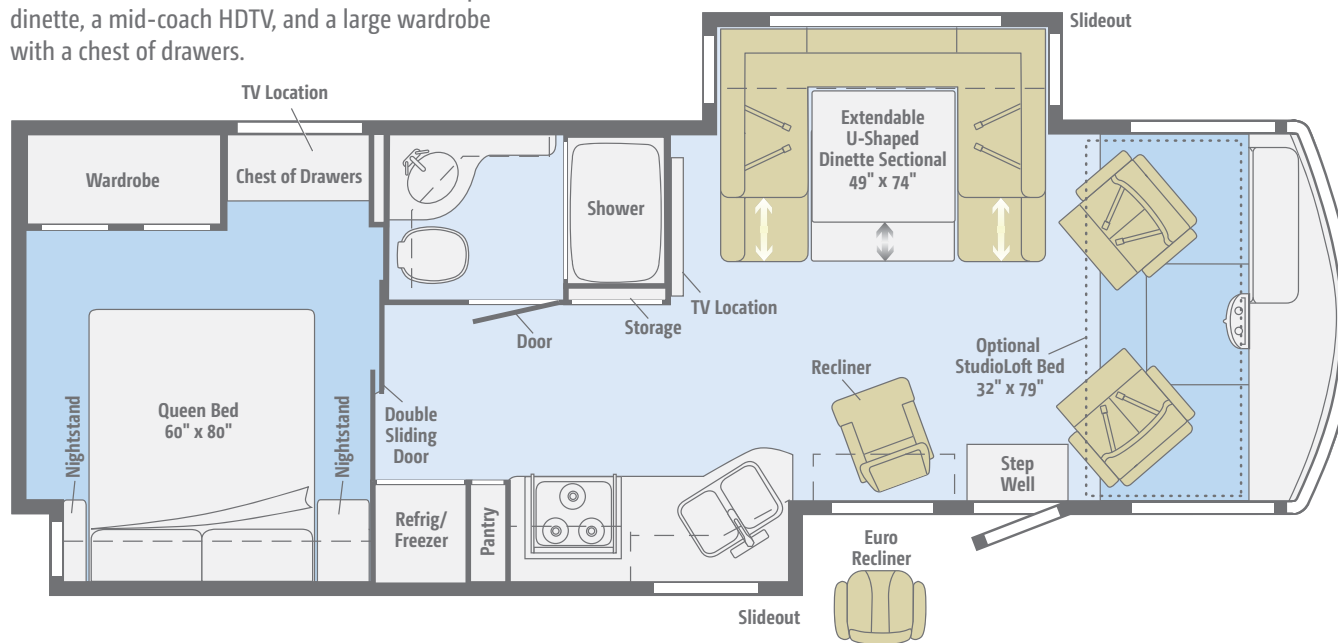
We're proud of our processes, state-of-the-art facilities, and the people who make Winnebago Industries number one. We invite you to visit our complex in Forest City, Iowa, for a first-hand look at the dedication and technology behind every motorhome we build.



Dimensions shown are for sleeping space only and may vary due to styling differences. Dashed lines denote overhead storage areas. Floorplans and specifications are also available online at GoWinnebago.com.

30A

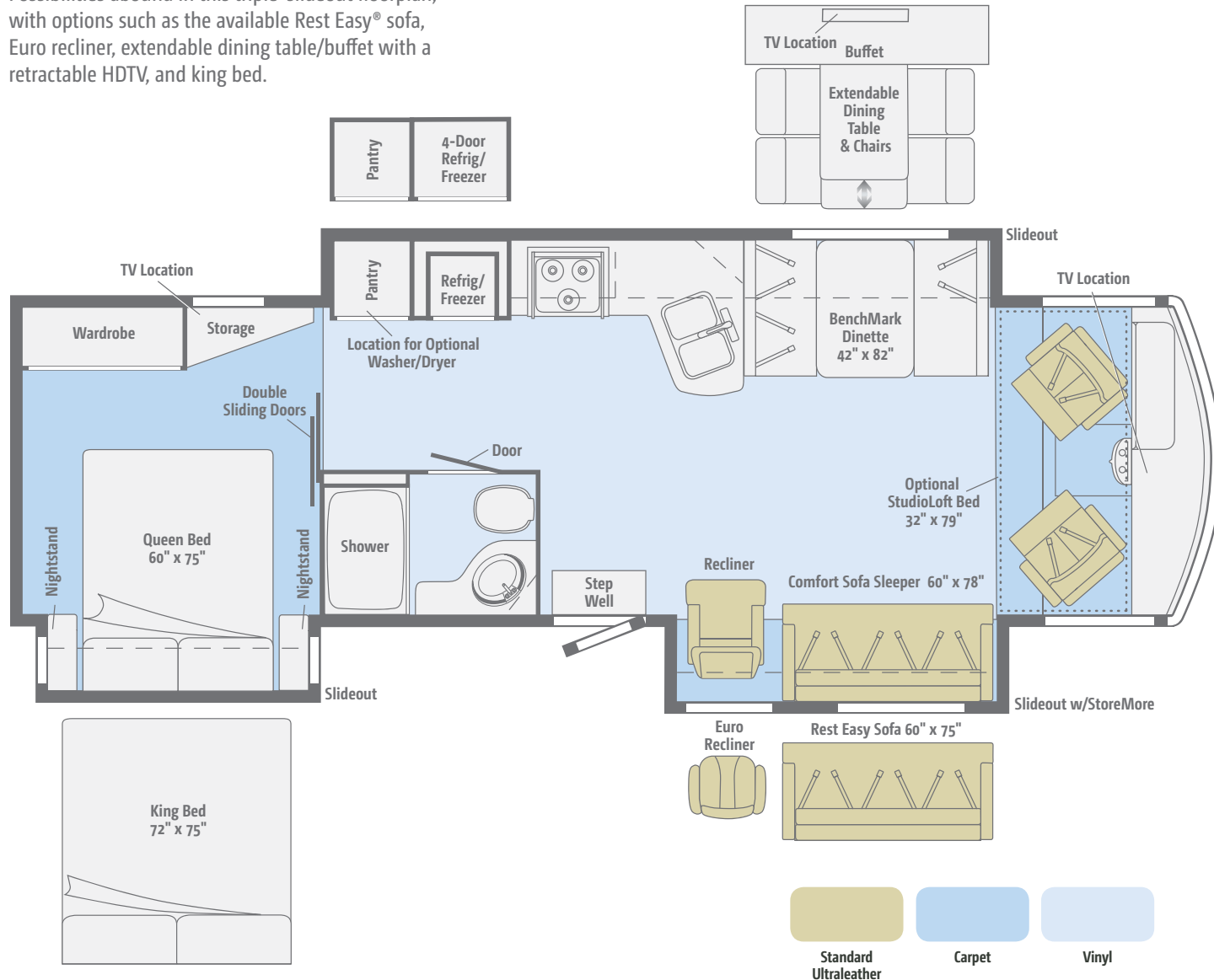
This dual-slideout floorplan offers a spacious and comfortable interior with an extendable U-shaped dinette, a mid-coach HDTV, and a large wardrobe with a chest of drawers.



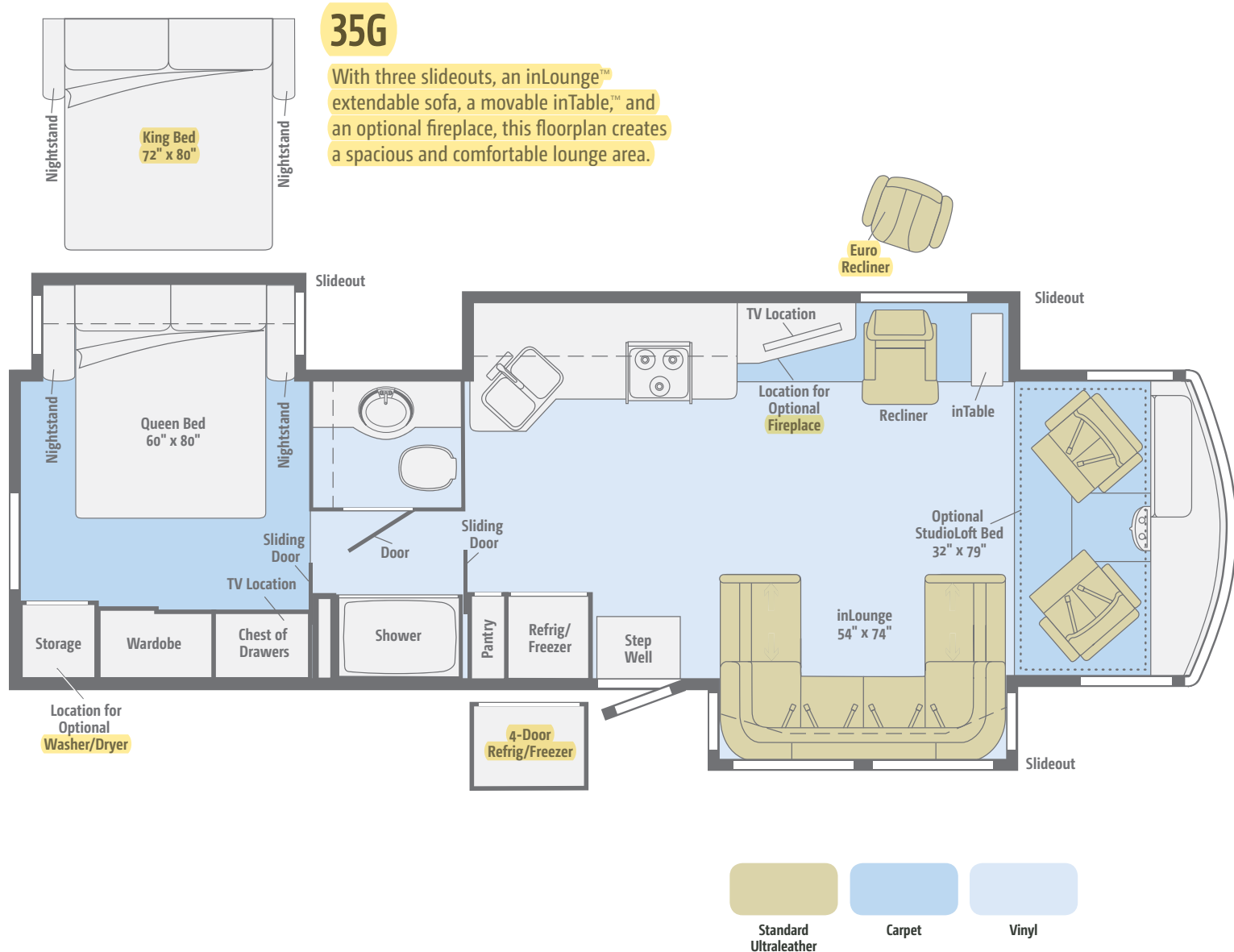
Dimensions shown are for sleeping space only and may vary due to styling differences. Dashed lines denote overhead storage areas. Floorplans and specifications are also available online at GoWinnebago.com.

33C

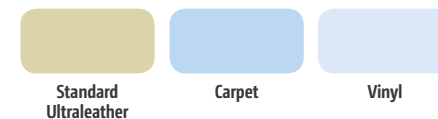
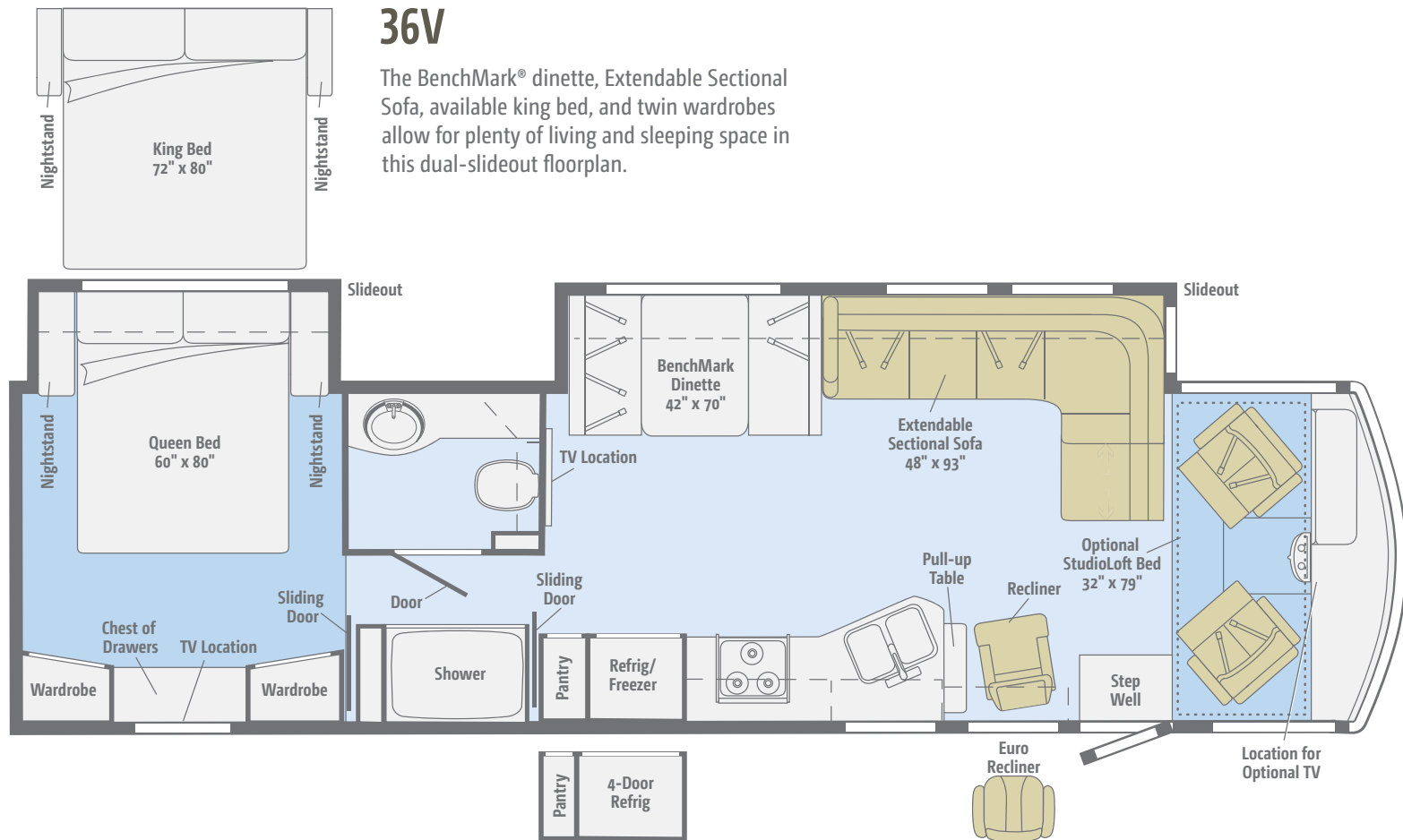
Possibilities abound in this triple-slideout floorplan, with options such as the available Rest Easy® sofa, Euro recliner, extendable dining table/buffet with a retractable HDTV, and king bed.



Dimensions shown are for sleeping space only and may vary due to styling differences. Dashed lines denote overhead storage areas. Floorplans and specifications are also available online at GoWinnebago.com.



Dimensions shown are for sleeping space only and may vary due to styling differences. Dashed lines denote overhead storage areas. Floorplans and specifications are also available online at GoWinnebago.com.



Choose from three fabric collections and four wood finishes, each with Satin Nickel hardware.

Arctic



Main



Ultraleather



Accent



Bedspread



Corian Countertop
(Galley)



Wall Board



Carpet



Vinyl



Honey Cherry



Forest Cherry



Coffee-Glazed
Vienna Maple



Coffee-Glazed
Honey Cherry

Choose from three fabric collections and four wood finishes, each with Satin Nickel hardware.

Fracture



Main



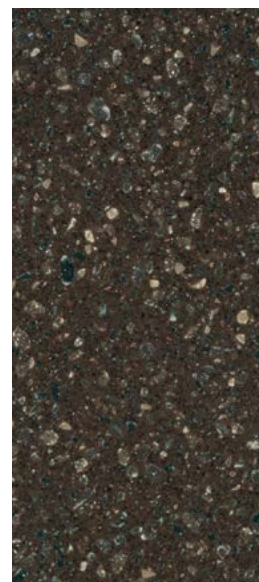
Ultraleather



Accent



Bedspread



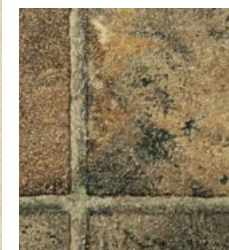
Corian Countertop
(Galley)



Wall Board



Carpet



Vinyl



Honey Cherry



Forest Cherry



Coffee-Glazed
Vienna Maple



Coffee-Glazed
Honey Cherry

Choose from three fabric collections and four wood finishes, each with Satin Nickel hardware.

Mountain View



Main



Ultraleather



Accent



Bedspread



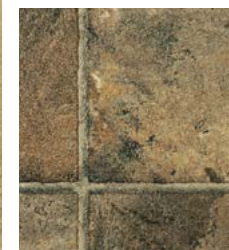
Corian Countertop
(Galley)



Wall Board



Carpet



Vinyl



Honey Cherry



Forest Cherry



Coffee-Glazed
Vienna Maple



Coffee-Glazed
Honey Cherry

Full-body paint comes standard in the style of your choice.



Light Khaki
FULL-BODY PAINT



Mahogany
FULL-BODY PAINT



Hot Iron
FULL-BODY PAINT



Scarlet
FULL-BODY PAINT

Weights & Measures

| | 30A | 33C | 35G | 36V |
|--|--------|--------|--------|--------|
| Length | 31'1" | 34'7" | 36'5" | 37'8" |
| Exterior Height ¹ | 12'6" | 12'5" | 12'4" | 12'5" |
| Exterior Width ² | 8'5.5" | 8'5.5" | 8'5.5" | 8'5.5" |
| Exterior Storage ³ (cu. ft.) | 90.5 | 104 | 115.8 | 180.4 |
| Awning Length | 15'6" | 19' | 18' | 20' |
| Interior Height | 6'8" | 6'8" | 6'8" | 6'8" |
| Interior Width | 8'0.5" | 8'0.5" | 8'0.5" | 8'0.5" |
| Freshwater Tank Capacity ⁴ (gal.) | 80 | 73 | 80 | 80 |
| Water Heater Capacity (gal.) | 6 | 10 | 10 | 6 |
| Holding Tank Capacity - Black/Gray ⁴ (gal.) | 38/53 | 39/60 | 38/50 | 38/50 |
| LP Capacity ⁵ (gal.) | 18 | 18 | 18 | 18 |
| Fuel Capacity (gal.) | 80 | 80 | 80 | 80 |
| GCWR ⁶ (lbs.) | 26,000 | 26,000 | 26,000 | 26,000 |
| GVWR (lbs.) | 22,000 | 22,000 | 22,000 | 22,000 |
| GAWR - Front (lbs.) | 8,000 | 8,000 | 8,000 | 8,000 |
| GAWR - Rear (lbs.) | 15,000 | 15,000 | 15,000 | 15,000 |
| Wheelbase | 190" | 220" | 228" | 242" |

Chassis

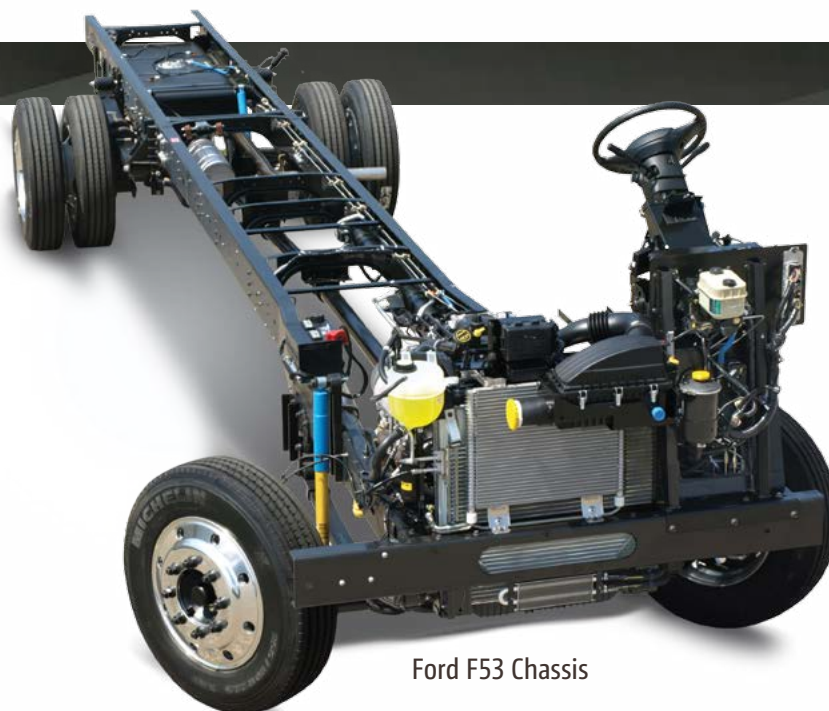
Ford® F53 Chassis 362-hp 6.8L 3-valve Triton® V10 SEFI engine, TorqShift™ 5-speed automatic transmission w/tow/haul, Hydro-Max power brakes, 4-wheel ABS, 175-amp. alternator

7-pin trailer wiring

Trailer Hitch⁶ 5,000-lb. drawbar/500-lb. maximum vertical tongue weight

Automatic hydraulic leveling jacks w/3-position controls

Stylized aluminum wheels w/22.5" tires



Ford F53 Chassis

Cab Conveniences

Cab seats adjustable armrests, lumbar support and multi-adjustable slide/recline/swivel

6-way power driver seat

3-point seat belts

Radio/Rearview Monitor System 6" LCD color touch screen, remote, iPod®/MP3 input, rear color camera

Chassis/house battery radio power switch

Power-assist steering w/tilt wheel

12-volt powerpoint

Cruise control

Power mirrors w/defrost and sideview cameras

Map lights

C.B. wire prep

MCD solar/blackout powered front shade

Solar shades for driver and passenger windows

Sideview camera system

Defroster fans

Dash workstation

OPTIONAL EQUIPMENT

Passenger seat w/footrest

SiriusXM™ receiver (subscription not included), remote, iPod interface connector

Interior

32" HDTV, front overhead (33C) (NA w/optional StudioLoft™ or optional dining table/buffet w/retractable HDTV)

42" HDTV, mid-coach (36V)

42" HDTV mounted to a locking extendable slide system, mid-coach (30A)

46" HDTV, mid-coach (35G)

Amplified digital TV antenna system

Entertainment center w/46" HDTV, mid-coach (35G)

LED ceiling lights

Satellite system ready (lounge and bedroom)

Soft vinyl ceiling

MCD solar/blackout roller shades (lounge, dinette, bath, bedroom)

MCD blackout shades (galley)

OnePlace® systems center

Tinted, dual-glazed, thermo-insulated windows

Powered ventilator fan (bedroom) (35G)

Powered ventilator fan (lounge)
 Powered roof vent (bath)
 Key-activated slideroom master lock switch
 Video Selection System
 Washer/dryer prep (33C, 35G)

OPTIONAL EQUIPMENT

StudioLoft™
 32" HDTV, front overhead cabinet (36V) (NA w/optional StudioLoft)
 46" HDTV, mid-coach (36V)
 48" HDTV, mid-coach (35G)
 Dining table/buffet/chairs w/retractable 39" HDTV (33C)
 Vinyl floor covering throughout (cab area and slideouts carpeted)
 Stackable washer/dryer (33C, 35G)
 Electric fireplace (35G)
 Winegard® Mission® automatic satellite TV antenna system
 Home Theater Sound System amplifier, DVD player, receiver, speakers, and subwoofer

Galley

Corian® solid-surface countertop, backsplash and sink covers
 2-door refrigerator/freezer
 Microwave/convection oven w/vented range hood
 3-burner range top w/cover and storage below
 Flip-up countertop extension (33C)

OPTIONAL EQUIPMENT

Large-capacity 2-door refrigerator/freezer w/icemaker and water filter (30A)
 4-door refrigerator/freezer w/icemaker (33C, 35G, 36V)
 3-burner range w/oven

Bath

Laminate countertop
 Flexible showerhead
 Textured glass shower door
 Skylight
 Porcelain toilet

Bedroom

Queen bed w/innerspring mattress and underbed storage (30A, 33C, 36V)
 Queen powered bed w/Ideal Rest® Nouveau digital comfort control mattress w/remotes (35G)
 Bedsread, pillows, and shams
 26" HDTV, DVD cable ready (30A, 33C)
 28" HDTV, DVD cable ready (35G, 36V)

OPTIONAL EQUIPMENT

King Ideal Rest Nouveau digital comfort control mattress w/remotes (33C, 36V)
 Powered king bed w/Ideal Rest Nouveau digital comfort control mattress w/remotes (35G)
 King bed w/Ideal Rest Nouveau digital comfort control mattress and underbed storage (33C, 36V)
 Queen Ideal Rest Nouveau digital comfort control mattress w/remotes (30A, 33C, 36V)
 28" HDTV, DVD cable ready (30A, 33C)

Exterior

Automatic entrance door steps
 Porch light
 Lighted storage compartments
 Premium smooth high-gloss skin
 KeyOne™ lock system
 Front mud flaps
 Ladder
 Powered patio awning w/LED lighting
 Additional powered patio awning w/LED lighting (above entrance door 30A)
 Lower front protective mask (w/full-body paint)

OPTIONAL EQUIPMENT

Entertainment Center 32" HDTV w/adjustable bracket, AM/FM stereo, CD/DVD, remote, 2 speakers

Heating & Cooling System

Two high-efficiency roof air conditioners w/Energy Management System
 35,000 BTU low-profile ducted furnace (30A, 33C)
 40,000 BTU low-profile ducted furnace (35G, 36V)

OPTIONAL EQUIPMENT

Two high-efficiency air conditioners w/heat pumps

Electrical System

AC/DC electrical distribution system, 55-amp. converter/charger
 50-amp. power cord
 5,500-watt Cummins Onan® Marquis Gold™ gas generator
 Generator/shoreline automatic changeover switch
 Two deep-cycle, Group 31 batteries
 Chassis and coach battery disconnect systems
 PowerLine® Energy Management System
 Automatic dual-battery charge control
 Auxiliary start circuit
 Exterior antenna jack and AC duplex receptacle
 1,000-watt inverter
 Generator prep kit

Plumbing System

Service Center color-coded labels, cable TV input, pressurized city water hookup w/diverter valve, 3" drainage valve, portable satellite dish hookup, power cord, 10' sewer hose, QuickPort® exterior wash station w/lighted pump switch
 Permanent-mount LP tank
 On-demand water pump
 TrueLevel™ holding-tank monitoring system
 Winterization Package water heater bypass valve and siphon tube
 Heated holding-tank compartment
 6-gallon 110 V/LP water heater w/motoraid and auto heater (30A, 36V)
 10-gallon 110 V/LP water heater w/motoraid and auto heater (33C, 35G)

Gravity water tank fill w/lockable door
 Holding tank flushing system
 LPG accessory connection (patio area)

Safety

Child seat tether anchor in forward-facing dinette seat (30A, 36V)
 LP, smoke, and carbon monoxide detectors
 10 BC fire extinguisher
 Ground fault interrupter
 High-mount brake lamp

Warranty⁷

12-month/15,000-mile basic limited warranty⁸

36-month/36,000-mile limited warranty on structure⁸

10-year limited parts-and-labor warranty on roof skin⁸

- The height of each model is measured to the top of the tallest standard feature and is based on the curb weight of a typically equipped unit. The actual height of your vehicle may vary by several inches depending on chassis or equipment variations. Please contact your dealer for further information.
- Floorplans feature a wide-body design – over 96". In making your purchase decision, you should be aware that some states restrict access on some or all state roads to 96" in body width. Before making your purchase decision, you should confirm the road usage laws in the states of interest to you.
- The load capacity of your motorhome is designated by weight, not by volume, so you cannot necessarily use all available space when loading your motorhome.
- Capacities are based on measurements prior to tank installation. Slight capacity variations can result due to installation applications.
- Capacities shown are tank manufacturer's listed water capacity (W.C.). Actual filled LP capacity is 80% of listing due to overfilling prevention device on tank.
- Actual towing capacity is dependent on your particular loading and towing circumstances, which includes the GVWR, GAWR, and GCWR as well as adequate trailer brakes. Please refer to the Operator's Manual of your vehicle for further towing information.
- See separate chassis warranty.
- See your dealer for complete warranty information.

NA Not Available

Not all items available in combination. See dealer for details.

Winnebago Industries® continuing program of product improvement makes specifications, equipment, model availability, and prices subject to change without notice. Published content reflects the most current product information at time of printing. Please consult your dealer for individual vehicle features and specifications.

GoWinnebago.com Has All The Answers

Visit GoWinnebago.com on your computer, smartphone or tablet for the latest product information and updates.



PREFERRED CARE PROGRAM

We back our motorhomes with best-in-class support both before *and* after the sale:

- 12-month/15,000-mile basic limited warranty
- 36-month/36,000-mile limited warranty on structure
- 10-year limited parts-and-labor warranty on roof skin
- Complimentary 24-hour roadside assistance program



TRIPSaver
FAST TRACK PARTS

- TripSaver® Fast Track Parts guarantees that in-stock warranty parts ship directly to your dealer within 24 hours
- National dealer service network



Join the Club, Join the Fun

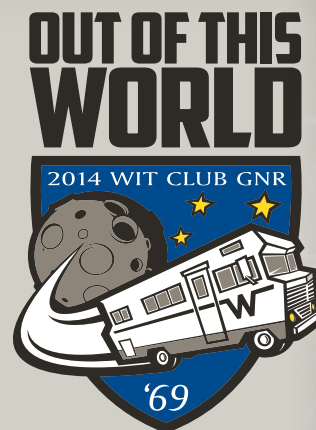
As a Winnebago motorhome owner, you are invited to join the WIT Club. It's a great way to take full advantage of your new coach and meet fun-loving WIT Club members from across the country who make motorhome adventures a way of life.



Members enjoy:

- Caravans and rallies
- Newsletters
- Local and state group activities
- RV travel benefits

See more at WITclub.com



Grand National Rally

In 1969, two things happened: Neil Armstrong took mankind's first steps on the moon, and Winnebago Industries' WIT Club launched its first Grand National Rally in Forest City, Iowa. Every year since then, thousands of rally-goers connect with old friends to enjoy concerts, tours, activities, and more. Blast off for an adventurous week in July to celebrate 45 years of interstate land roving at the 2014 "Out of This World" Grand National Rally. It's a mission you'll never forget!